

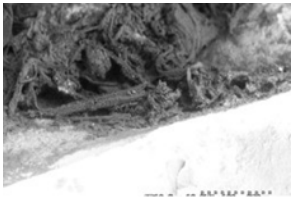
Images of RS10 (*Picea-whittling*) residues

using Hitachi S3500N VP-SEM

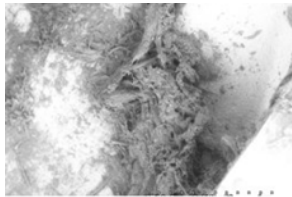
The key to the images is at the beginning of the document.

The images published in this pdf are those that were used in the training portion of the experiment reported in Monnier et al. 2012, *J. Arch. Sci.* For questions, please contact Gilliane Monnier at monni003@umn.edu.

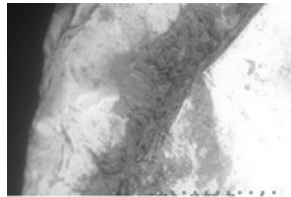
Naming conventions: 'RS' = Residue Study; 'D' = Dorsal side; 'V' = Ventral side; 'a', 'b', etc. = residue label; '25', '50', '115' = magnification used



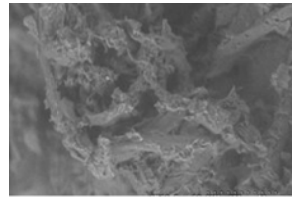
RS12D_a02.TIF



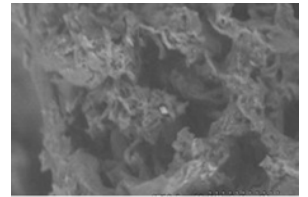
RS12D_a03.TIF



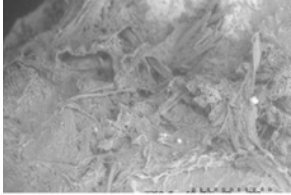
RS12D_b01.TIF



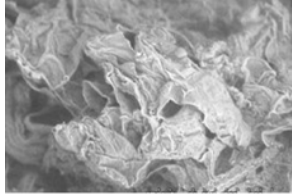
RS12D_b02.TIF



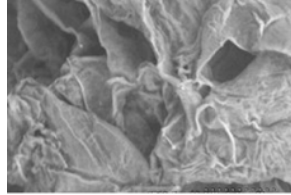
RS12D_b03.TIF



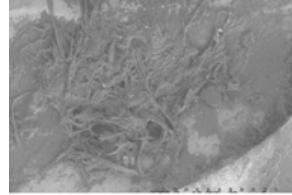
RS12D_c01.TIF



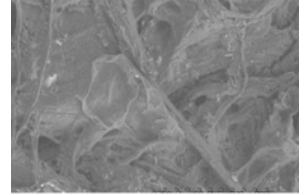
RS12D_c02.TIF



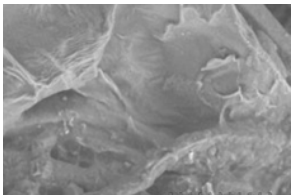
RS12D_c03.TIF



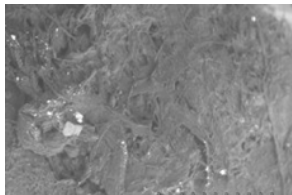
RS12D_d01.TIF



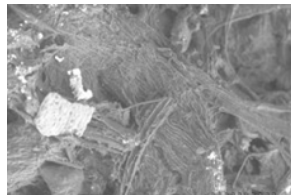
RS12D_d02.TIF



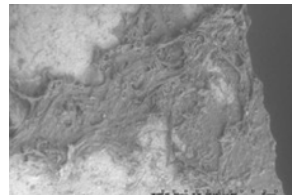
RS12D_d03.TIF



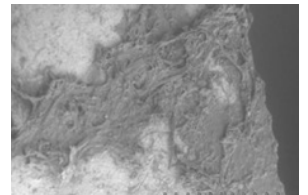
RS12D_e01.TIF



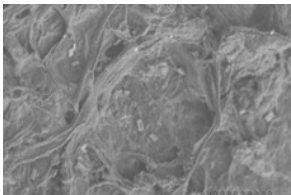
RS12D_e02.TIF



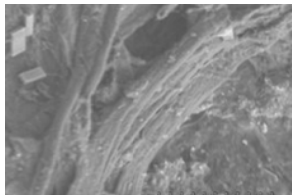
RS12D_f01 reduced.tif



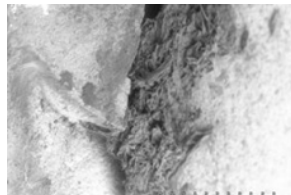
RS12D_f01.TIF



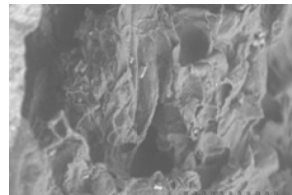
RS12D_f02.TIF



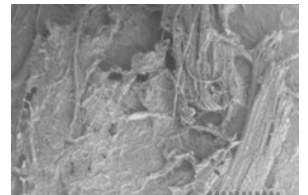
RS12D_f03.TIF



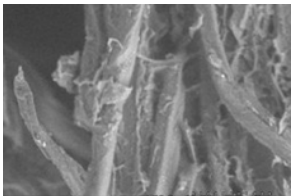
RS12D_g01.TIF



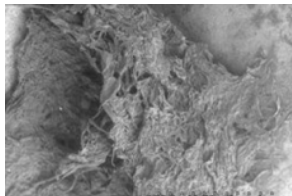
RS12D_g02.TIF



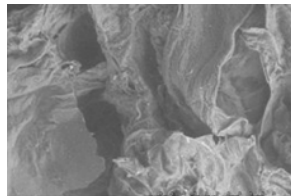
RS12V_a01.TIF



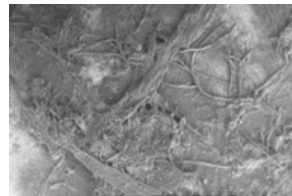
RS12V_a02.TIF



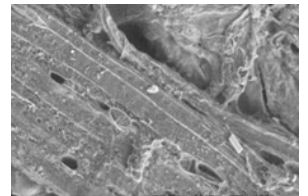
RS12V_d01.TIF



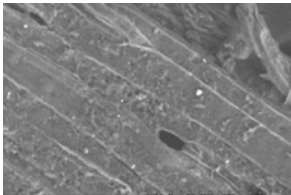
RS12V_d02.TIF



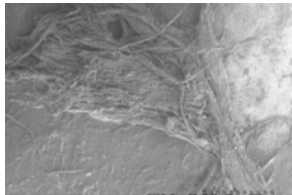
RS12V_n01.TIF



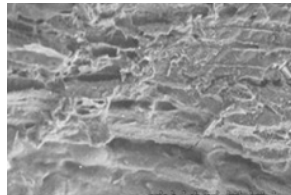
RS12V_n02.TIF



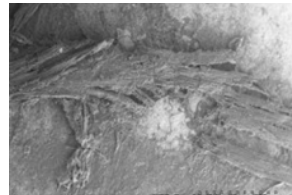
RS12V_n03.TIF



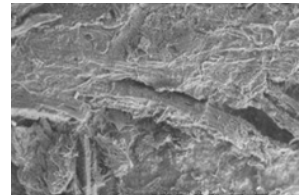
RS12V_o01.TIF



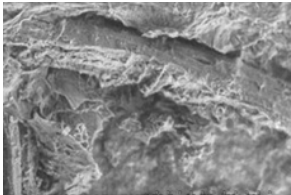
RS12V_o02.TIF



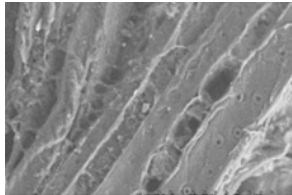
RS12V_q02.TIF



RS12V_q03.TIF



RS12V_q04.TIF



RS12V_q05.TIF



